

THIS  
BOOKLET  
BELONGS TO



# FIGURE IT OUT???



## TALLEST TREE

**What is the tallest tree at Keji?**

Look around Keji for the tallest tree you can find.

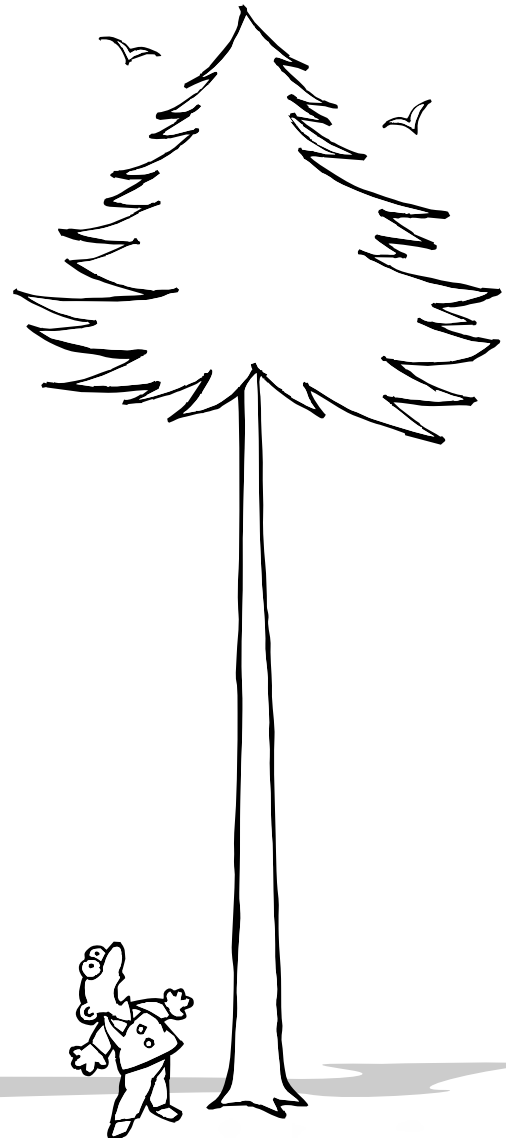
Where is your tree?

What kind of tree do you think it is?

How old do you think it is?

What animals do you think live in your tree?

Draw what you think you would see if you could climb to the top of that tree.

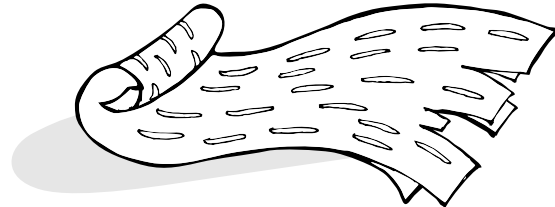


# FIGURE IT OUT???



## BIRCH BARK

Find some birch bark at Keji.  
It looks like this:



Please do not peel it off of the tree because that can harm the tree.

Look closely at the bark. Feel the bark and circle the words that describe it.

Heavy

Light

Stiff

Flexible

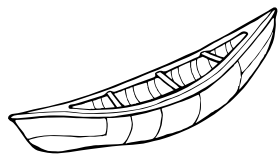
Thick

Thin

Add your own descriptive words here:

\_\_\_\_\_

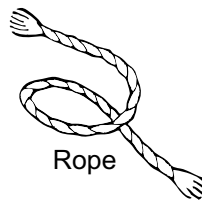
It is also: flammable and resistant to water, insects, and rotting.  
Circle the items that you think the Mi'kmaq used birchbark to make:



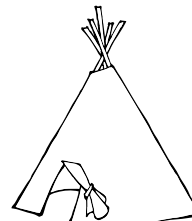
Canoe



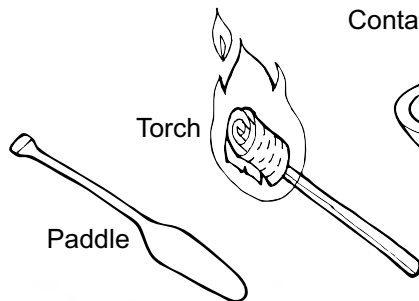
Container



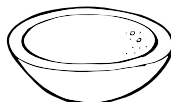
Rope



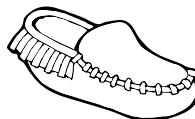
Wigwam



Torch



Bowl



Moccasin



Kettle

Paddle

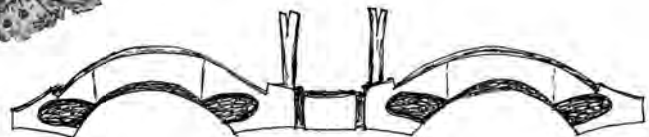
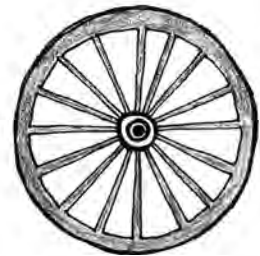
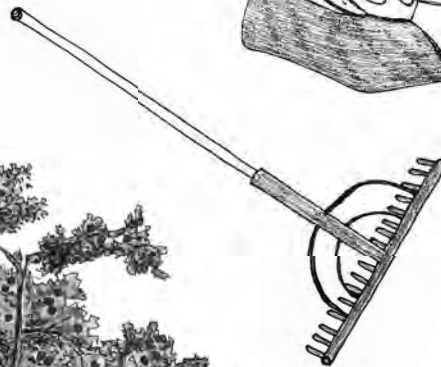
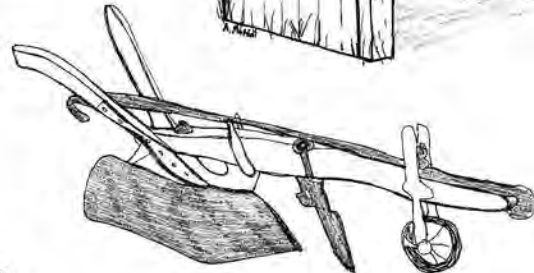
# TAKE A WALK



## FARMLANDS FIND

Hike the farmlands trail and learn about an old farm and orchard that once was located on the top of a drumlin. While you are hiking, find following items and check them off the list:

- ☐ An old barn
- ☐ A wagon wheel
- ☐ An old apple tree in the forest
- ☐ An old plow
- ☐ A hay rake
- ☐ An oxen yoke



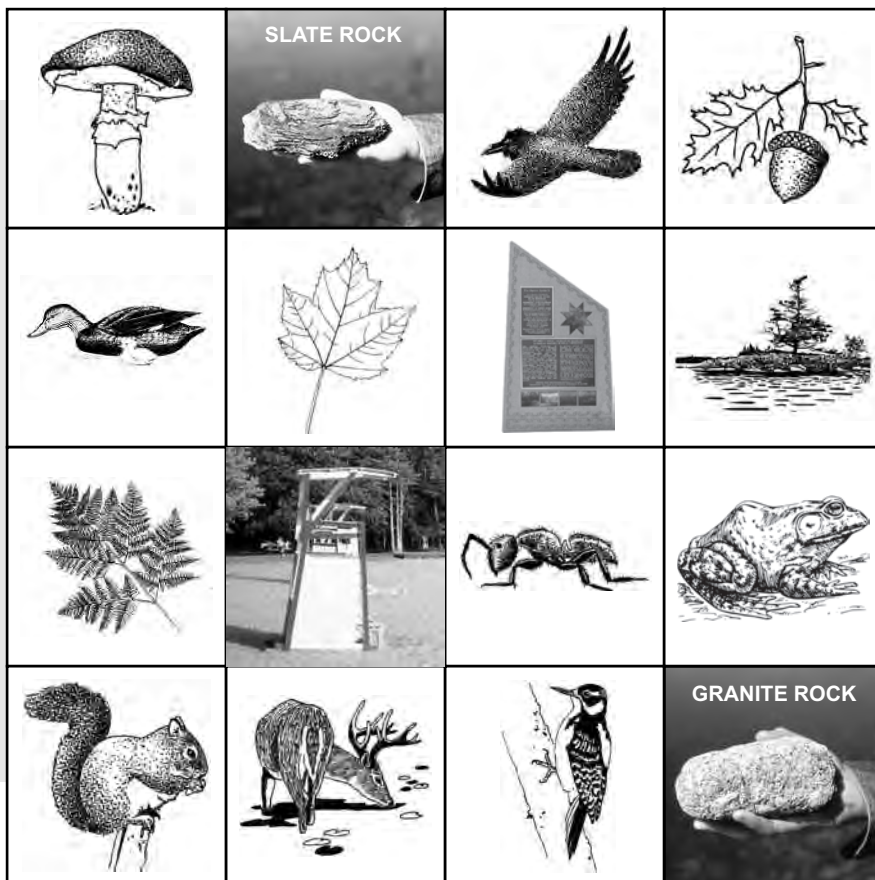
# GO PLAY



## KEJI BINGO

Go to the **Merrymakedge** area and look for these items.  
When you spot one, mark the square with an 'X'.

Find 4 in a row across, down or diagonally - or see if you  
can find them all!





# IMAGINE



## MI'KMAW VILLAGE



Take a hike/bike/drive to Merrymakedge P2 and sit on the benches at the Mi'kmaq Encampment Site. Above is what this area might have looked like thousands of years ago when it was a Mi'kmaq village.

Imagine living right here in a time before electricity, running water, houses, cars, computers, internet, grocery stores. Look at the picture and take a good look around you.

**What would you build your home/shelter from?  
What materials would you use for the:**

**Walls?** \_\_\_\_\_

**Floor?** \_\_\_\_\_

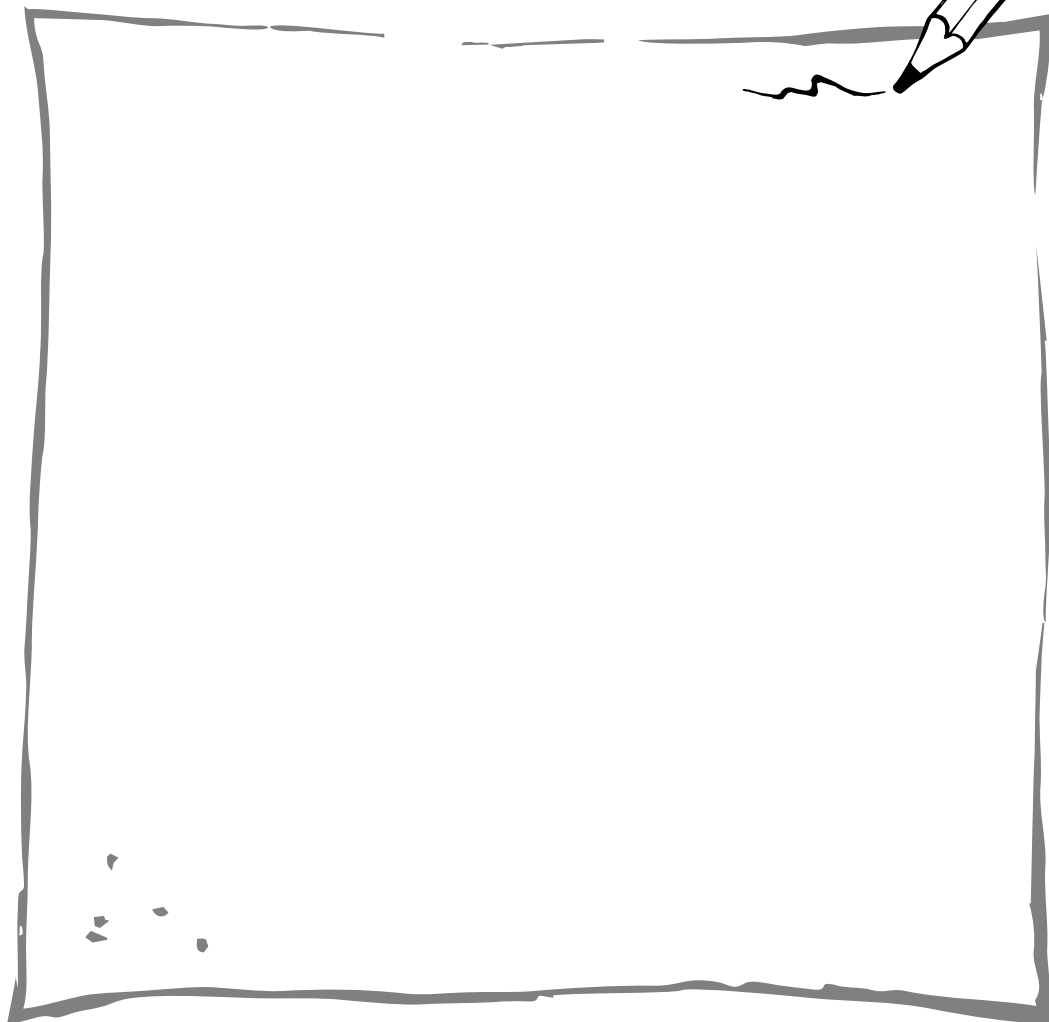
**Door?** \_\_\_\_\_

**Beds?** \_\_\_\_\_

# IMAGINE .



Draw your ideal encampment here:



# GO MEET



## THE MI'KMAW FIGURES

Go find the monument at far side of the Merrymakedge P1 parking lot. This monument was created to represent the Mi'kmaq people and their history in Kejimikujik.

- Locate the 8-pointed star on the monument and look closely at the 8 figures in the points of the stars.
- Find the two missing figures and draw them in the boxes.



**Xplorers Xtra:** Sign up for a Petroglyph tour with a cultural Interpreter to learn more about these Mi'kmaq figures.



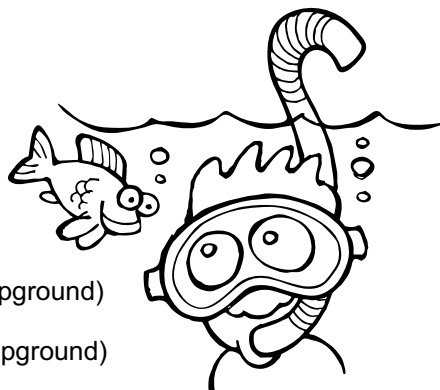
# USE YOUR SENSES



## BEACH DAY!

Spend an afternoon at one of these amazing beaches in Kejimikujik:

- 1) **Merrymakedge Beach**
- 2) **Kedge Beach**  
(at the base of Jim Charles Point)
- 3) **Slapfoot Beach**  
(just off of the Slapfoot trail in Jeremy's Bay Campground)
- 4) **Meadow Beach**  
(in the lower Meadow loop on Jeremy's Bay Campground)



Keep your senses alert to discover new and unique sights, sounds, smells, and textures. Challenge yourself and others to try and record one thing for each square.

Something shiny _____	A nice smell _____	Something hot _____	An animal that swims underwater _____
An animal that can fly _____	Something noisy _____	An animal call _____	A plant that grows in the sand _____
Something smooth _____	Something rough _____	A plant that grows in the water _____	Something that floats on water _____

### Xplorer Xtra:

If you are at Kejimikujik for a long time, try this activity at other beaches and compare!

# SEARCH FOR



## LOOKING FOR LICHENS!

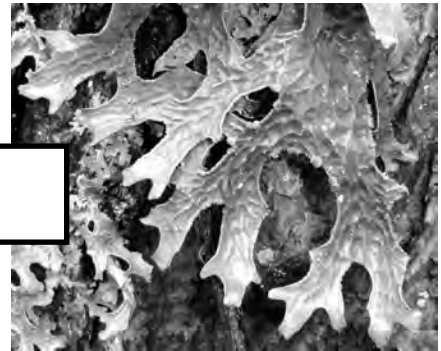
Lichens are not plants or animals. They are a combination of an algae and a fungus living together. Lichen are everywhere! See how many of these lichens you can find at Keji. You may have to visit a few different places In Keji to find them all!

Check the boxes of the ones you find!

### ***LOOK: Along the Slapfoot Trail***

1) *Lobaria pulmonaria* – “Lung Lichen”

Hint: Usually on the trunks of maples and oaks!



2) *Usnea* sp. – “Old Man's Beard”

Hint: Look up in branches of the trees!

3) *Hypogymnia Physodes* – “Monk's Hood”

Hint: It is very white with a black border.



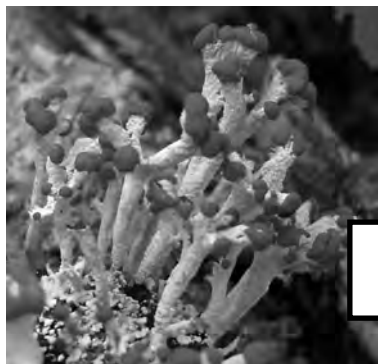
# SEARCH FOR



**LOOK: Along the roadsides in the gravel**

4) *Dibaeis baeomyces* - "Pink Earth"

Hint: It looks like bits of pink foam in the gravel and is also called "fairy puke"!



**LOOK: On exposed stumps, especially along the edge of Grafton Lake!**

5) *Cladonia cristatella* – "British Soldiers"

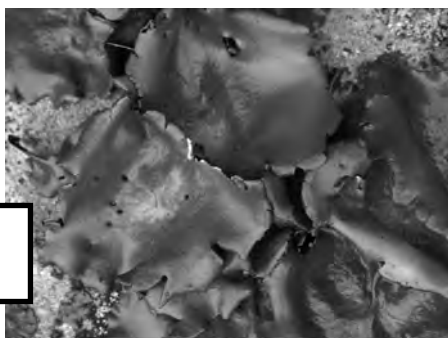
Hint: It looks like several soldiers with white uniforms and red caps standing at attention!



**LOOK: On the big granite boulders along the shore of Keji Lake!**

6) *Umbilicaria mammulata* – "Smooth Rock Tripe"

Hint: It is green to dark brown in colour and looks a bit like kelp or seaweed. It was used for food and purple dye by the Mi'kmaq



How many lichens did you locate? \_\_\_\_\_

**Xplorers Xtra: Take pictures of the lichens so that you will remember them!**

# GO INVESTIGATE



## STANDING THE TEST OF TIME

Locate the Eel Weir bridge on your Keji map (Pages 16-17) in your Visitor Guide and go there! A very long time ago, this area looked like this:



Stand on the big wooden bridge and see if you can spot something in the Mersey River that is also in the above picture! \*

### HINTS:

- It is "V-Shaped" or arrow-shaped pointing towards where the water is flowing
- It may be more visible in low water than in high water.
- It dates back a few thousand years!!!

*\* It is an Eel Weir! The Mi'kmaq made Eel Weirs in the Mersey River to funnel eels into an area so that they could easily catch eels.*

Did you find one? \_\_\_\_\_ Did you find two? \_\_\_\_\_

**Xplorers Xtras: Walk to the southern end of Portage "O" and see the Eel Weir there! Take a picture of an Eel Weir!**



# REMEMBER

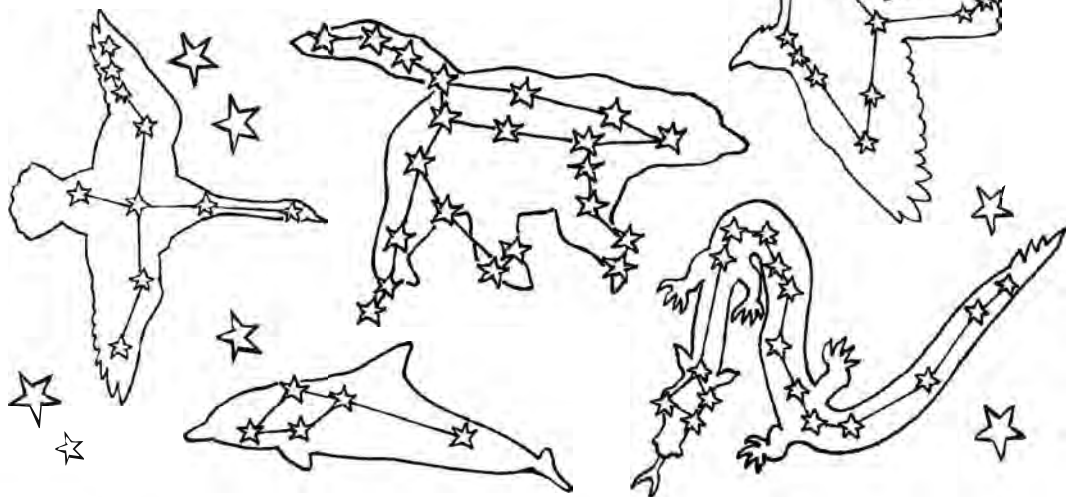
## DARK SKY DISCOVERY

Go to a Dark Sky interpretive program at the Sky Circle in Jeremy's Bay Campground P1 (check schedule to see when they happen).

What was your favourite part about the program?



Ask the Interpreter for a special star sticker for your book!



# GET MOVING



## HIKE / BIKE / RUN YOUR AGE

While you are at Keji, try to travel your age in kilometres! Check out the Keji Trail Guide on page 18 of the visitor guide and plan out the trails that you need to take to make up your age.

For example, if you are 10 years old, you could hike Hemlocks and Hardwoods trail (5km) and run the Mill Falls Trail (2km return) and then bike the Peter point trail (3 km return) to travel 10 kilometres!

How old are you?

What trails did you travel on?

How did you travel?



# TRY IT OUT !!



## MAKE LU'SKNIKN AT YOUR CAMPFIRE!

The Mi'kmaw people, who lived for over four thousand years in this area, cooked all their meals using a campfire. Get your campfire going with some nice hot coals for cooking and try baking this yummy traditional Mi'kmaw bread called lu'sknikn ("looskinakin").



### Lu'sknikn Recipe

- 3 cups of flour
- 2 tablespoons of baking powder
- 1/4 teaspoon of salt
- 2 tablespoons of cooking oil (optional)

- Mix together the dry ingredients and then slowly add water. Add enough water to make the mixture sticky, but still thick.
- Roll and flatten it into thin pieces (about 30 cm long)
- Carefully wrap them around hot dog sticks or even a HOT DOG.
- Bake your bread by holding it and turning it over the coals, not the flames, until it is an even toasty brown colour
- Let cool and serve! YUM! It is good with butter, jam, molasses, and maple syrup!

**Xplorers Xtra:** Try baking your own Keji Campfire Recipe and serving it to your friends and family to try out! What is it called?? \_\_\_\_\_

# MAKE BELIEVE



## BE PLAYFUL AT THE AMPHITHEATRE

Write a 5 minute play all about Keji. Be inspired by things like:

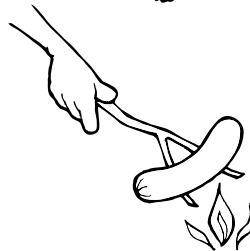
- Keji Mi'kmaw History



- Your Favourite Keji Animal



- Your Favourite Keji Activity



What is your play about?

Who will the characters of your play be?

Rehearse your play and present it to friends, family, and other visitors. The amphitheatre is available most mornings and afternoons. Check the schedule to make sure it is available for your presentation.

**Xplorers Xtra: Video tape your play and show your family and friends back home!**

# MY ADVENTURE AT

**Kejimikujik National Park and  
National Historic Site**

STICK A  
PICTURE  
OF YOU  
VISITING  
THIS PLACE!

P.S. HEY, DON'T FORGET  
TO TELL ALL YOUR  
FRIENDS ABOUT WHAT  
YOU DID TO BE A  
PARKS CANADA XPLOER!

MEMORIES OF  
MY DAY AS AN **XPLORER**



CAN YOU HELP US OUT ???

HERE'S YOUR CHANCE TO TELL US WHAT YOU THINK ABOUT THE ACTIVITIES IN YOUR XPLORE BOOKLET.



### Extra Comments

[illegible]

DON'T FORGET  
TO CHECK THE  
OTHER SIDE!

### Stuff your adult needs to know...the fine print

**Participation is voluntary.** All information provided will remain anonymous and confidential, and the results will be used in aggregate form only. If you have any questions about the collection and use of the information in this survey, please email us at [information@pc.gc.ca](mailto:information@pc.gc.ca) or call 1-888-773-8888.



## Please return to the admissions desk. *Thanks for your help!*

1. While completing your Xplorers booklet, was it... **Circle** your answer.
- CRAZY FUN   FUN   KINDA FUN   NOT SO MUCH FUN   BOOORINNG

2. Were the activities: **Circle** your answer.
- TOO EASY   EASY   JUST RIGHT   HARD   TOO HARD

3. Which 3 activities did you like best? **Circle** your answers.
- Which 3 activities did you like least? Put a **big X** through them.

### ACTIVITIES:

BEACH DAY!	STANDING THE TEST OF TIME
BE PLAYFUL AT THE AMPHITHEATRE	HIKE / BIKE / RUN YOUR AGE
MI'KMAW VILLAGE	FARMLANDS FIND
TALLEST TREE	LOOKING FOR LICHENS
BIRCH BARK	MAKE LU'SKNIKN AT YOUR CAMPFIRE
KEJI BINGO	THE MI'KMAW FIGURES
	DARK SKY DISCOVERY

4. How old are you? **Circle** your answer.
- UNDER 6   BETWEEN 6 AND 8   BETWEEN 9 AND 11   12 AND OLDER

